

The background of the entire page is a white, woven texture, resembling a basketweave or a similar fabric pattern. The threads are interlaced in a consistent, repeating pattern, creating a subtle, three-dimensional effect.

H|L

HECTOR LANDGRAVE

LOS ANGELES CA

FINISHES

Landgrave.



Hector + Zara Landgrave

FINISHES



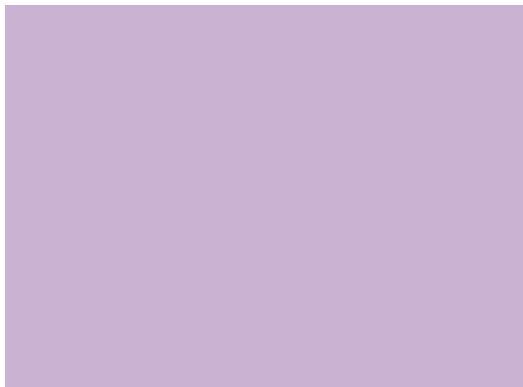
Chalk



Caviar



Malted Milk



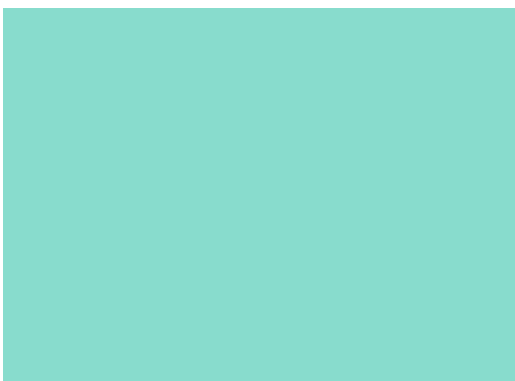
Free Spirit



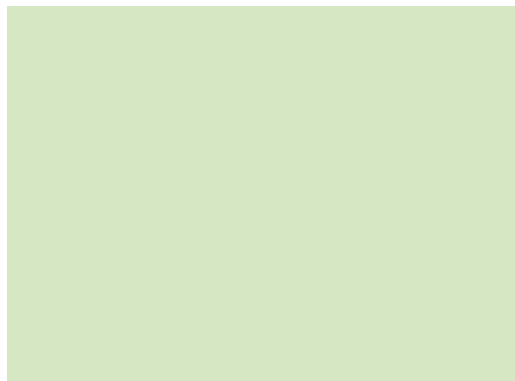
Tint



Undercool



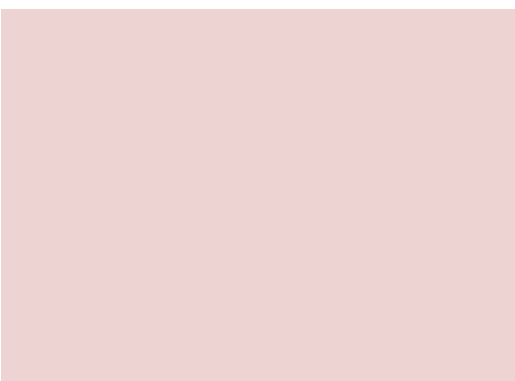
Caribbean



Green Vibes



Blond



Charming Pink

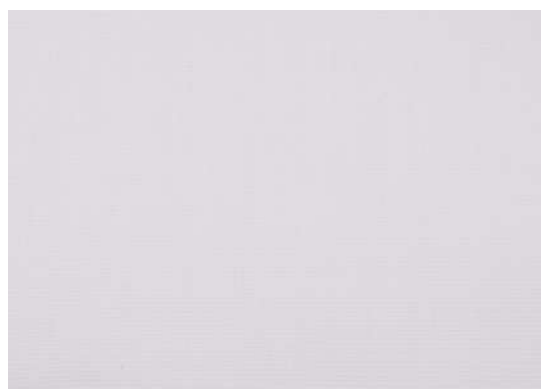


In the Pink

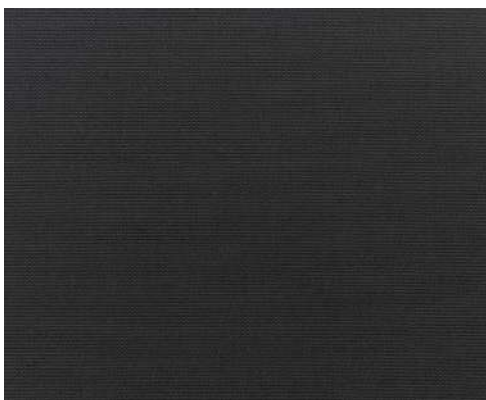


Real Red

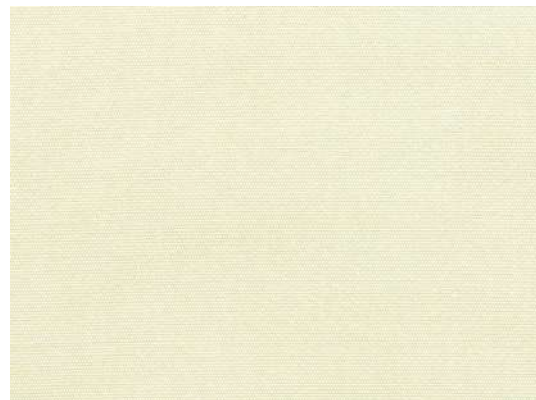
Fabrics



Canvas White



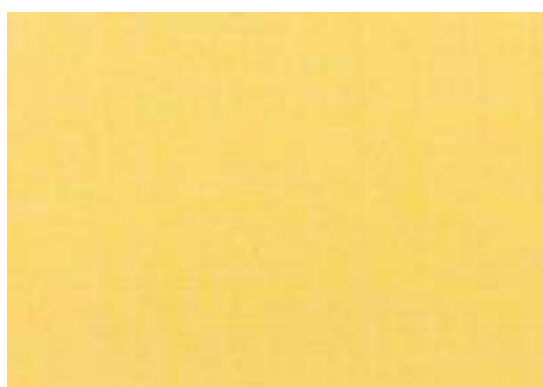
Canvas Black



Canvas Natural



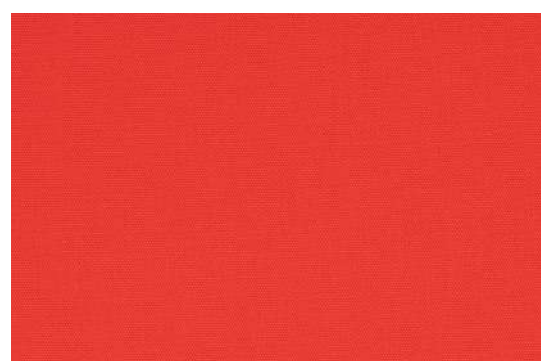
Aruba



Canvas Buttercup



Canvas Hot Pink



Capriccio Logo Red

Rope



Ooh lala!!!



Love



Twist

Plastic Woven



Honey



Dark



White

Designed by Hector Landgrave Casa in California

H|L

HECTOR LANDGRAVE

LOS ANGELES CA

www.hectorlandgravecasa.com